



# CATALOG

**BES**<sup>®</sup>  
BEAUTY & SCIENCE  
**CATALOG**  
JANUARY 2024



**HI-FI HAIR COLOR**  
**147 NUANCES**  
 PERMANENT COLOR 100 ml - 3.5 Fl. Oz.  
 ART. 48001 - 48992



**BES HI-FI HAIR COLOR** nasce dalla volontà di offrire un colore ultra naturale, dinamico, luminoso e vibrante, ponendo sempre al primo posto la salute e il rispetto assoluto del capello e del cuoio capelluto.

Dopo anni di successi, dopo aver fatto innamorare migliaia di coloristi in tutto il mondo, dopo aver conquistato le persone con i suoi colori unici e riflessi incomparabili, BES HI-FI HAIR COLOR cambia look. Un nuovo packaging, con l'introduzione di nuovi colori e modifiche formulative che rendono BES HI-FI HAIR COLOR ancora più sorprendente di quanto già non fosse.

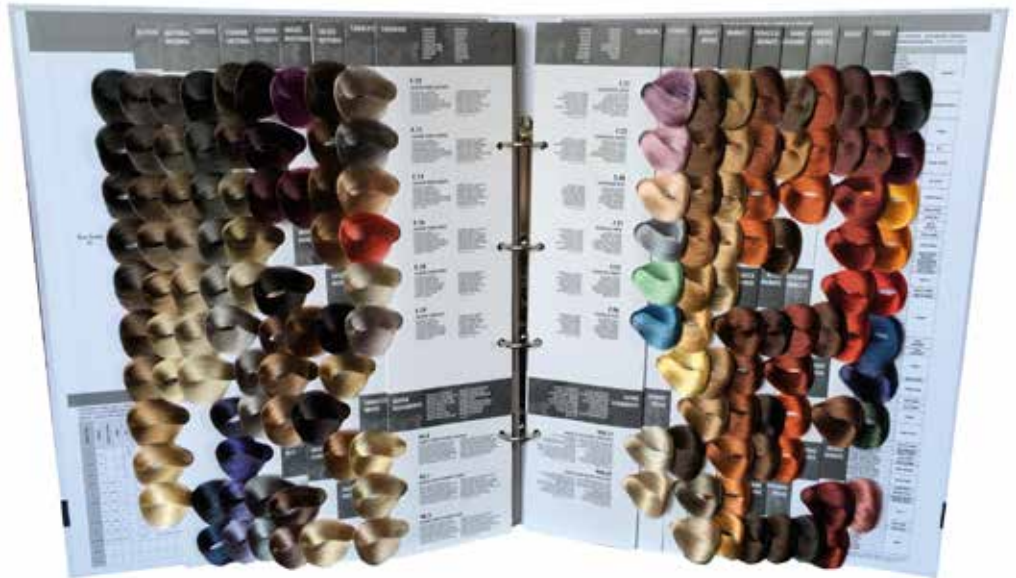
**The new BES HI-FI HAIR COLOR** arises from the desire to offer an ultra natural, dynamic, luminous and vibrant hair color, always with the main goal to create a healthy and absolute respectful product for the hair and for the scalp.

After many years of success, after having made thousands of colorists fall in love all over the world, after having conquered people with its unique colors and incomparable reflections, BES HI-FI HAIR COLOR changes its look.

A new packaging, with the introduction of new colors and formulation changes that make BES HI-FI HAIR COLOR even more surprising than what it already was.



**FOLDER HI-FI IT ART. 47203**  
**FOLDER HI-FI EN-FR-ES-NL ART. 47204**  
**FOLDER HI-FI RO-RU-CZ-HU ART. 47205**



**BES HI - FI HAIR COLOR CHART with rings NEW**  
**147 NUANCES**  
 ART. 47201



**BES HI-FI PROMO BAG**  
 ART. 47202



**BES HI - FI HAIR COLOR CHART cheap NEW**  
**147 NUANCES**  
 ART. 47200



**HI-FI GROUND DISPLAY**  
 70 cm x h 100 cm  
 ART. 47210



**HI-FI GROUND DISPLAY**  
 70 cm x h 100 cm  
 ART. 47206



**HI-FI GROUND DISPLAY**  
 70 cm x h 100 cm  
 ART. 47207



**HI-FI GROUND DISPLAY**  
 70 cm x h 100 cm  
 ART. 47208



**HI-FI GROUND DISPLAY**  
 70 cm x h 100 cm  
 ART. 47209



**HI-FI GROUND DISPLAY**  
 70 cm x h 100 cm  
 ART. 47211



COLOR CREME  
**REGAL**

**BES**  
PROFESSIONAL COLORING



**REGAL COLOR CREME  
67 NUANCES**  
PERMANENT COLOR 60 ml - 2.1 Fl. Oz.  
ART. 06001 - 06993



**BES PROFESSIONAL COLORING  
72 NUANCES**  
PERMANENT COLOR 100 ml - 3.5 Fl. Oz.  
ART. 07001 - 07993



**COLOR CHART  
BES PROFESSIONAL / REGAL COLOR CREME with rings**  
ART. 13067

**bes  
ton**



**BES TON KIT - 33 NUANCES**  
PERMANENT COLOR  
EACH KIT CONTAINS:  
1 PC. PERMANENT COLOR 60 ml - 2.1 Fl. Oz. + 1 PC. ACTIVATOR 60 ml - 2.1 Fl. Oz.  
1 PC. AMPHOTERIC SHAMPOO 15 ml - 0.5 Fl. Oz. + 1 PC. CONDITIONER pH 2,5 - 15 ml - 0.5 Fl. Oz.  
ART. 20010 - 20923



**COLOR CHART BES TON**  
ART. 13024



**BES TON GROUND EXPO METAL**  
ART. 13268

**KONTRAST  
HAIR  
COLOR**



**BES KONTRAST KIT - 8 NUANCES**  
PERMANENT COLOR  
1 PC. PERMANENT COLOR SOLUTION 1 - 40 ml - 1.4 Fl. Oz.  
1 PC. PERMANENT COLOR SOLUTION 2 - 40 ml - 1.4 Fl. Oz.  
ART. 30133 - 30166



**FOLDER BES KONTRAST IT-EN**  
ART. 13031



**COLOR CHART BES KONTRAST**  
ART. 13269

ZERO AMMONIA

**Regal®  
Zero**  
ZERO PPD



**REGAL ZERO  
51 NUANCES**  
NO AMMONIA NO PPD - PERMANENT COLOR 100 ml - 3.5 Fl. Oz.  
ART. 37010 - 37936



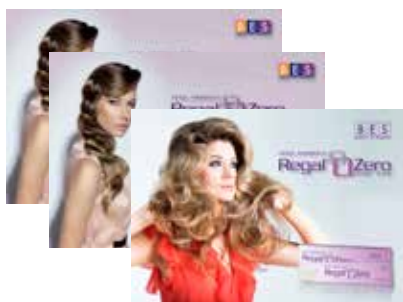
**REGAL ZERO COLOR CHARTS  
with rings**  
ART. 13232



**REGAL ZERO COLOR CHARTS**  
ART. 13231



**REGAL ZERO TOTEM**  
ART. 47034



**FOLDER REGAL ZERO IT-EN-FR ART. 13019**  
**FOLDER REGAL ZERO HU-CZ-RU ART. 13018**  
**FOLDER REGAL ZERO ES-NL-PL ART. 13020**



**BES REGAL ZERO PROMOTIONAL CASE**  
COD. ART. 13228



**BES REGAL ZERO TECHNICAL AND PRACTICAL  
HANDBOOK**  
COD. ART. 13021

# REGAL SOFT COLOR



**REGAL SOFT COLOR**  
48 NUANCES  
DEMI PERMANENT COLOR 60 ml - 2.1 Fl. Oz.  
ART. 28001 - 28878



**FOLDER REGAL SOFT COLOR**  
ART. 13068 CS-H-NL  
ART. 13069 IT-F-EN

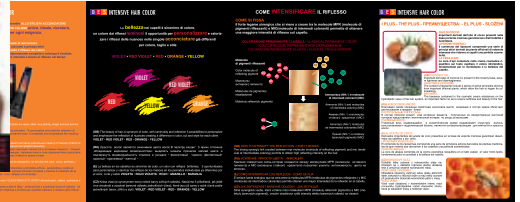


**COLOR CHART REGAL SOFT COLOR**  
ART. 13140

# INTENSIVE HAIR COLOR



**BES INTENSIVE**  
5 NUANCES  
REFLEX INTENSIFIER 60 ml - 2.1 Fl. Oz.  
ART. 60022 - 60066



**FOLDER BES INTENSIVE**  
ART. 13627 IT-EN-ES-RU-CS  
ART. 13628 FR-NL-HU-RO-SK

# Movie Colors



**MOVIE COLORS**  
20 NUANCES  
DIRECT COLOR 170 ml - 6 Fl. Oz.  
ART. 16021 - 16040



**BES MOVIE COLORS COLOR CHART**  
ART. 16041



**BES MOVIE COLORS PROMO EXPO BOX**  
31 cm x 37 cm x h 22 cm (closed)  
ART. 47046



**BES MOVIE COLORS STYLIST BEAUTY CART**  
64 cm x 56 cm x h 90 cm  
ART. 47047



**BES MOVIE COLORS CUBE KIT**  
32 cm X 32 cm  
ART. 47044



**BES MOVIE COLORS TOTEM**  
50 cm x h 157 cm  
ART. 47045



**BES MOVIE COLORS FOLDER**  
ART. 47049 IT-EN-FR-ES-NL  
ART. 47050 CS-RO-HU-RU-UK



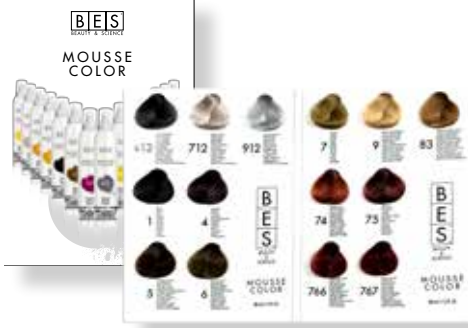
**BES MOVIE COLORS MIXING GUIDE PALETTE**  
ART. 47048





**MOUSSE COLOR**

14 NUANCES  
TEMPORARY DIRECT  
HAIR COLORING  
200 ml - 7 Fl. Oz.



**BES MOUSSE COLOR CHART**  
ART. 13160



**412 INTENSE GRAY**  
ART. 15001



**712 PEARL GRAY**  
ART. 15002



**912 SILVER GRAY**  
ART. 15003



**1 BLACK**  
ART. 15004



**4 BROWN**  
ART. 15005



**5 LIGHT BROWN**  
ART. 15006



**6 DARK BLOND**  
ART. 15007



**7 BLOND**  
ART. 15008



**9 VERY LIGHT BLOND**  
ART. 15009



**83 LIGHT GOLDEN BLOND**  
ART. 15010



**74 COPPER BLOND**  
ART. 15011



**75 MAHOGANY**  
ART. 15012



**766 BRIGHT RED**  
ART. 15013



**767 VIOLET RED**  
ART. 15014



**OXIBES 10 VOL**  
ART. 08211 - 120 ml - 4.2 Fl. Oz.  
ART. 08216 - 250 ml - 8.8 Fl. Oz.



**OXIBES 20 VOL**  
ART. 08212 - 120 ml - 4.2 Fl. Oz.  
ART. 08217 - 250 ml - 8.8 Fl. Oz.



**OXIBES 30 VOL**  
ART. 08312 - 120 ml - 4.2 Fl. Oz.  
ART. 08218 - 250 ml - 8.8 Fl. Oz.



**OXIBES 40 VOL**  
ART. 08412 - 120 ml - 4.2 Fl. Oz.  
ART. 08219 - 250 ml - 8.8 Fl. Oz.



**OXIBES 0 VOL**  
ART. 09200 - 1000 ml - 35.2 Fl. Oz.



**OXIBES 10 VOL**  
ART. 09201 - 1000 ml - 35.2 Fl. Oz.



**OXIBES 20 VOL**  
ART. 09202 - 1000 ml - 35.2 Fl. Oz.



**OXIBES 30 VOL**  
ART. 09203 - 1000 ml - 35.2 Fl. Oz.



**OXIBES 40 VOL**  
ART. 09204 - 1000 ml - 35.2 Fl. Oz.



**OXIBES 10 VOL**  
ART. 09205 - 5000 ml - 176 Fl. Oz.



**OXIBES 20 VOL**  
ART. 09206 - 5000 ml - 176 Fl. Oz.



**OXIBES 30 VOL**  
ART. 09207 - 5000 ml - 176 Fl. Oz.



**OXIBES 40 VOL**  
ART. 09208 - 5000 ml - 176 Fl. Oz.



# REGAL SOFT ACTIVATORS



**ACTIVATOR 1**  
ART. 08001 - 1000 ml - 35.2 Fl. Oz.



**ACTIVATOR 2**  
ART. 08003 - 1000 ml - 35.2 Fl. Oz.



**ACTIVATOR 3**  
ART. 08005 - 1000 ml - 35.2 Fl. Oz.



**ACTIVATOR 1**  
ART. 08002 - 120 ml - 4.2 Fl. Oz.



**ACTIVATOR 2**  
ART. 08004 - 120 ml - 4.2 Fl. Oz.



**ACTIVATOR 3**  
ART. 08006 - 120 ml - 4.2 Fl. Oz.



# ACTIVATORS



**MASK 5 VOL 1,5%**  
ART. 08501 - 1000 ml - 35.2 Fl. Oz.  
ART. 08506 - 150 ml - 5.3 Fl. Oz.



**SHADE 10 VOL 3%**  
ART. 08502 - 1000 ml - 35.2 Fl. Oz.  
ART. 08507 - 150 ml - 5.3 Fl. Oz.



**BALANCE 20 VOL 6%**  
ART. 08503 - 1000 ml - 35.2 Fl. Oz.  
ART. 08508 - 150 ml - 5.3 Fl. Oz.



**HIGH LIGHT 30 VOL 9%**  
ART. 08504 - 1000 ml - 35.2 Fl. Oz.  
ART. 08509 - 150 ml - 5.3 Fl. Oz.



**ULTRA LIGHT 40 VOL 12%**  
ART. 08505 - 1000 ml - 35.2 Fl. Oz.  
ART. 08510 - 150 ml - 5.3 Fl. Oz.



**DECOBES WHITE**  
LIGHTENING POWDER  
FOR NATURAL RESULTS  
ART. 08470 - 500 g - 17.6 oz.



**DECOBES BLUEBERRY**  
GENTLE LIGHTENING POWDER  
FOR AN EXTRA PLATINUM RESULT  
ART. 08469 - 500 g - 17.6 oz.



**DECOBES GRAPHITE POWDER**  
LIGHTENING POWDER  
TO ENHANCE COOL TONES  
ART. 08471 - 500 g - 17.6 oz.



**DECOBES BLUE KOMPACT**  
LIGHTENING POWDER  
FOR UNIFORM AND CONTROLLED ACTION  
ART. 08474 - 500 g - 17.6 oz.



**PURE WHITE BLUEBERRY CLASSIC**  
LIGHTENING POWDER  
TO ENHANCE COOL TONES  
ART. 08465 - 500 g - 17.6 oz.



**DECOBES GRAPHITE CREAM**  
PREMIUM LIGHTENING CREAM  
FOR SUPREME SHADES OF BLOND  
ART. 08472 - 250 g - 8.8 oz.



**DECOBES WHITE**  
LIGHTENING POWDER  
TO ENHANCE COOL TONES  
ART. 08475 - 300 g - 10.5 oz.  
(Box 12 envelopes x 25 g each - 0.9 oz.)



**DECOBES GRAPHITE POWDER**  
LIGHTENING POWDER  
TO ENHANCE COOL TONES  
ART. 08473 - 300 g - 10.5 oz.  
(Box 12 envelopes x 25 g each - 0.9 oz.)



**PURE WHITE BLUEBERRY CLASSIC**  
LIGHTENING POWDER  
TO ENHANCE COOL TONES  
ART. 08476 - 300 g - 10.5 oz.  
(Box 12 envelopes x 25 g each - 0.9 oz.)



**DECOBES FOLDER**  
ART. 47214 IT-EN  
ART. 47216 FR-CS



**DECOBES GROUND DISPLAY**  
30 cm x 13 cm x h 65 cm  
ART. 47218

# DECOBES LINE

HAIR BLEACHING PRODUCTS



**DECOBES WHITE**  
LIGHTENING POWDER  
FOR NATURAL RESULTS  
ART. 08450 - 450 g POT - 15.8 oz.



**DECOBES APPLE**  
LIGHTENING POWDER  
FOR A WELL-DEFINED AND BALANCED ACTION  
ART. 08455 - 450 g POT - 15.8 oz.



**DECOBES BLU KOMPACT**  
LIGHTENING POWDER  
FOR UNIFORM AND CONTROLLED ACTION  
ART. 08456 - 450 g POT - 15.8 oz.



**DECOBES APPLE**  
LIGHTENING POWDER  
FOR A WELL-DEFINED AND BALANCED ACTION  
ART. 08035 - 300 g - 10.5 oz.  
(Box 12 envelopes x 25 g each - 0.9 oz.)



**DECOBES WHITE**  
LIGHTENING POWDER  
FOR NATURAL RESULTS  
ART. 08250 - 300 g - 10.5 oz.  
(Box 12 envelopes x 25 g each - 0.9 oz.)



**DECOBES BLEACHING OIL**  
ART. 08452 - 1000 ml - 35.2 Fl. Oz.



**DECOBES WHITE BLEACHING CREAM**  
ART. 08451 - 220 g - 8.8 oz.



**DECOBES REMOVER KIT**  
ART. 08453  
EACH KIT CONTAINS:  
1 PC. LOTION 1 150 ml - 5.3 Fl. Oz.  
1 PC. LOTION 2 150 ml - 5.3 Fl. Oz.



**BARRIER CREAM**  
TO PROTECT THE SKIN FROM THE COLOR STAINS  
ART. 08457 - 150 ml - 5.3 Fl. Oz.



**STAINLESS CREAM**  
WITH A HIGH-CLEANSING ACTION  
ART. 08462 - 150 ml - 5.3 Fl. Oz.



**DECOBES SALON FOLDER**  
ART. 13080 - EN-FR-NL  
ART. 13081 - IT-CS-ES  
ART. 13082 - RU-HU-RO

**BES**  
BEAUTY & SCIENCE

**KRYSTAL**  
LAMINATION  
TREATMENT



**1 - SHAMPOO DETOX**  
ART. 26001 - 300 ml - 10.5 Fl. Oz.



**2 - PHYTO LAMINATION POTION**  
ART. 26002 - 500 ml - 17.6 Fl. Oz.



**3 - SEALING ELISIR**  
ART. 26003 - 150 ml - 5.3 Fl. Oz.



**4 - MIRRORING DROPS**  
ART. 26004 - 50 ml - 1.7 Fl. Oz.



**KLT DISPLAY BOX**  
34 cm x 24 cm x h 10 cm  
ART. 26000  
EACH KIT CONTAINS 1 PC.  
n° 1 + n° 2 + n° 3 + n° 4



**KLT DESK DISPLAY**  
21 cm x 9 cm x h 30 cm  
ART. 26011



**KLT SALON FOLDER**  
30 cm x h 21 cm  
ART. 26010 - IT - EN - FR



**KLT GROUND DISPLAY**  
70 cm x 35 cm x h 100 cm  
ART. 26012



# REPAIR



**REPAIR R1  
REGENERATING SHAMPOO**  
ART. 12730 - 1000 ml - 35.2 Fl. Oz.



**REPAIR R1  
REGENERATING SHAMPOO**  
ART. 12731 - 300 ml - 10.5 Fl. Oz.



**REPAIR R2  
DEEP RECONSTRUCTION MASK**  
ART. 12732 - 500 ml - 17.6 Fl. Oz.



**REPAIR R2  
DEEP RECONSTRUCTION MASK**  
ART. 12733 - 170 ml - 6 Fl. Oz.



**REPAIR R3  
ULTIMATE REPAIR BALM**  
ART. 12734 - 1000 ml - 35.2 Fl. Oz.



**REPAIR R3  
ULTIMATE REPAIR BALM**  
ART. 12735 - 300 ml - 10.5 Fl. Oz.



**REPAIR R4  
REPAIRING LIGHT SERUM**  
ART. 12736 - 100 ml - 3.5 Fl. Oz.



**REPAIR R5  
RECONSTRUCTIVE GLOSS DROPS**  
ART. 12737 - 100 ml - 3.5 Fl. Oz.



**REPAIR R6  
TONUS REPAIRING LOTION BOX**  
ART. 12738 - 120 ml - 4.2 Fl. Oz.  
(Box 8 phials x 15 ml - 0.52 Fl. Oz. each)



**REPAIR SAMPLES R1 + R3**  
ART. 12739  
R1 REGENERATING SHAMPOO 15 ml 0.52 Fl. Oz.  
R3 ULTIMATE REPAIR BALM 15 ml 0.52 Fl. Oz.



**REPAIR DISPLAY BOX WITH PRODUCTS**  
36 cm x 25 cm x h 9 cm (closed)  
ART. 12740  
EACH KIT CONTAINS 1 PC.  
R1+R2+R3+R4+R5+R6



**REPAIR SHOPPER**  
22 cm x 10 cm x h 27,7 cm  
ART. 12741



**REPAIR SALON FOLDER**  
30 cm x h 21 cm  
ART. 12742 - IT-EN-FR-ES  
ART. 12750 - CS-RO-HU-RU



**REPAIR LEAFLET**  
10 cm x h 21 cm  
ART. 12743 - IT-EN-FR-ES  
ART. 12748 - CS-HU-RO-RU



**REPAIR GROUND DISPLAY**  
70 cm x 35 cm x h 100 cm  
ART. 12744



**REPAIR BANNER**  
60 cm x h 180 cm  
ART. 12746



**REPAIR BANNER ROLL-UP**  
80 cm x h 200 cm  
ART. 12747



**REPAIR GROUND ROTATING WOOD EXPO**  
52 cm x 52 cm x h 200 cm  
ART. 47151



**REPAIR GROUND WOOD EXPO**  
50 cm x 35 cm x h 180 cm  
ART. 47152



**REPAIR DESK DISPLAY WITH LEAFLETS**  
21 cm x 12 cm x h 29,7 cm  
ART. 12745

# KERATIN SMOOTHING TREATMENT



**VIDEO SMOOTHING INTENSIVE TREATMENT**



**VIDEO NO FRIZZ SOFT TREATMENT**



**PRE-TREATMENT SHAMPOO**  
ART. 34000 - 500 ml - 17.6 Fl. Oz.



**KERATIN SMOOTHING FLUID**  
ART. 34001 - 500 ml - 17.6 Fl. Oz.



**LONG LASTING SHAMPOO**  
ART. 34002 - 500 ml - 17.6 Fl. Oz.  
ART. 34003 - 250 ml - 8.8 Fl. Oz.



**KERATIN SMOOTHING TR. BANNER ROLL-UP**  
80 cm x h 200 cm  
ART. 47120



**DEEP MOISTURIZING HAIR MASK**  
ART. 34004 - 500 ml - 17.6 Fl. Oz.  
ART. 34005 - 250 ml - 8.8 Fl. Oz.



**SMOOTHING SILKY THERAPY**  
ART. 34006 - 100 ml - 3.5 Fl. Oz.



**KERATIN SMOOTHING TR. GROUND DISPLAY**  
70 cm x 35 cm x h 100 cm  
ART. 47139 - IT  
ART. 47140 - EN



**KERATIN SMOOTHING TR. SALON FOLDER**  
30 cm x 30 cm  
ART. 43022 - IT - EN - FR - ES

# CHAINPLEX<sup>®</sup>

FEEL THE DIFFERENCE!



**VIDEO CHAINPLEX**



**CHAIN REBUILDER N1**  
ART. 18000  
1000 ml - 35.2 Fl. Oz.



**CHAIN STABILIZER N2**  
ART. 18003  
1000 ml - 35.2 Fl. Oz.



**HAIR IMPROVER N3**  
ART. 18006  
100 ml - 3.5 Fl. Oz.



**STARTER KIT**  
ART. 18007  
EACH KIT CONTAINS:  
1 PC. CHAIN REBUILDER N1 - 100 ml - 3.5 Fl. Oz.  
2 PC. CHAIN STABILIZER N2 - 100 ml - 3.5 Fl. Oz.



**HAIR SALON KIT**  
ART. 18008  
EACH KIT CONTAINS:  
1 PC. CHAIN REBUILDER N1 - 500 ml - 17.6 Fl. Oz.  
2 PC. CHAIN STABILIZER N2 - 500 ml - 17.6 Fl. Oz.



**CHAINPLEX SALON TOTEM**  
50 cm x h 157 cm  
ART. 18020



**CHAINPLEX SALON FOLDER**  
30 cm x 30 cm  
ART. 18005/F - IT-EN-FR-ES-NL  
ART. 18006/F - IT-CS-PL-SK-HU  
ART. 18007/F - VN-RO-BG-GR-RU



**CHAINPLEX BANNER ROLL-UP**  
80 cm x h 200 cm  
ART. 18021

# COMPLEX DP SPLIT ENDS TREATMENT



**DP COMPLEX**  
ART. 12106  
30 ml - 1.06 Fl. Oz.



**DESK EXPO DP COMPLEX**  
26 cm x 30 cm x h 32 cm  
ART. 12119

# Ginseng



**GINSENG HAIR LOSS ACTIVE LOTION**  
ART. 12036 - 120 ml - 4.2 Fl. Oz.  
(Box of 12 phials x 10 ml - 0.35 Fl. Oz. each)



**GINSENG HAIR LOSS ACTIVE SHAMPOO**  
ART. 10311 - 150 ml - 5.3 Fl. Oz.

**COLOR REFLECTION**

SHAMPOO & MASK



<b>COOL-IT</b> SHAMPOO ART. 10405 - 1000 ml - 35.2 Fl. Oz. SHAMPOO ART. 10406 - 300 ml - 10.5 Fl. Oz. MASK ART. 10407 - 1000 ml - 35.2 Fl. Oz. MASK ART. 10408 - 300 ml - 10.5 Fl. Oz.	<b>ARCTIC GRAY</b> SHAMPOO ART. 10409 - 1000 ml - 35.2 Fl. Oz. SHAMPOO ART. 10410 - 300 ml - 10.5 Fl. Oz. MASK ART. 10411 - 1000 ml - 35.2 Fl. Oz. MASK ART. 10412 - 300 ml - 10.5 Fl. Oz.	<b>PURPLE GAME</b> SHAMPOO ART. 10413 - 1000 ml - 35.2 Fl. Oz. SHAMPOO ART. 10414 - 300 ml - 10.5 Fl. Oz. MASK ART. 10415 - 1000 ml - 35.2 Fl. Oz. MASK ART. 10416 - 300 ml - 10.5 Fl. Oz.
--	--	--



<b>VIOLET RAYS</b> SHAMPOO ART. 10417 - 1000 ml - 35.2 Fl. Oz. SHAMPOO ART. 10418 - 300 ml - 10.5 Fl. Oz. MASK ART. 10419 - 1000 ml - 35.2 Fl. Oz. MASK ART. 10420 - 300 ml - 10.5 Fl. Oz.	<b>ORANGE THERAPY</b> SHAMPOO ART. 10421 - 1000 ml - 35.2 Fl. Oz. SHAMPOO ART. 10422 - 300 ml - 10.5 Fl. Oz. MASK ART. 10423 - 1000 ml - 35.2 Fl. Oz. MASK ART. 10424 - 300 ml - 10.5 Fl. Oz.	<b>HOT CHOCOLATE</b> SHAMPOO ART. 10425 - 1000 ml - 35.2 Fl. Oz. SHAMPOO ART. 10426 - 300 ml - 10.5 Fl. Oz. MASK ART. 10427 - 1000 ml - 35.2 Fl. Oz. MASK ART. 10428 - 300 ml - 10.5 Fl. Oz.	<b>FIRE LIMIT</b> SHAMPOO ART. 10429 - 1000 ml - 35.2 Fl. Oz. SHAMPOO ART. 10430 - 300 ml - 10.5 Fl. Oz. MASK ART. 10431 - 1000 ml - 35.2 Fl. Oz. MASK ART. 10432 - 300 ml - 10.5 Fl. Oz.
--	---	--	---



**COLOR REFLECTION SALON FOLDER**  
30 cm x h 21 cm  
ART. 43019 - IT - EN - FR - ES  
ART. 43020 - CS - RO - RU - HU



**COLOR REFLECTION TOTEM**  
50 cm x h 157 cm  
ART. 47133

**COLOUR LOCK**  
by **BES**  
BEAUTY & SCIENCE



**COLOUR LOCK DESK DISPLAY**  
30 cm x 9 cm x h 21 cm  
ART. 31024



**COLOUR LOCK DESK EXPO**  
40 cm x 18 cm x h 32 cm  
ART. 31025



**COLOUR LOCK SALON FOLDER**  
30 cm x h 21 cm  
ART. 31019 - EN - FR - ES - RU  
ART. 31020 - IT - EN - FR - ES  
ART. 31021 - NL - CS - HU - RO



**CLARIFYING SHAMPOO**  
ART. 31029 - 100 ml - 3.5 Fl. Oz.  
ART. 31002 - 300 ml - 10.5 Fl. Oz.  
ART. 31001 - 1000 ml - 35.2 Fl. Oz.  
ART. 31014 - 5000 ml - 176 Fl. Oz.



**AMPHOTEN SHAMPOO**  
ART. 31030 - 100 ml - 3.5 Fl. Oz.  
ART. 31004 - 300 ml - 10.5 Fl. Oz.  
ART. 31003 - 1000 ml - 35.2 Fl. Oz.  
ART. 31015 - 5000 ml - 176 Fl. Oz.



**MAXIMUM MOISTURE CONDITIONER**  
ART. 31031 - 100 ml - 3.5 Fl. Oz.  
ART. 31006 - 300 ml - 10.5 Fl. Oz.  
ART. 31005 - 1000 ml - 35.2 Fl. Oz.  
ART. 31016 - 5000 ml - 176 Fl. Oz.



**EMULSION D CONDITIONER**  
ART. 31032 - 100 ml - 3.5 Fl. Oz.  
ART. 31008 - 300 ml - 10.5 Fl. Oz.  
ART. 31007 - 1000 ml - 35.2 Fl. Oz.  
ART. 31017 - 5000 ml - 176 Fl. Oz.



**MIDOPLA MASK**  
ART. 31033 - 50 ml - 1.7 Fl. Oz.  
ART. 31009 - 250 ml - 8.8 Fl. Oz.  
ART. 31010 - 500 ml - 17.6 Fl. Oz.  
ART. 31011 - 1000 ml - 35.2 Fl. Oz.



**PROTEIN FILLER SPRAY**  
ART. 31012 - 150 ml - 5.3 Fl. Oz.



**COLOR CHECK CREAM**  
ART. 31013 - 170 ml - 6 Fl. Oz.



# BES SOLAIRE

sun - sea - swimming pool

**SUMMER HAIR MASK**  
ART. 19020 - 180 ml - 6.3 Fl. Oz.

**SUN CARE SHAMPOO**  
ART. 19021 - 300 ml - 10.5 Fl. Oz.

**HAIR PROTECTIVE SUNNY OIL**  
ART. 19022 - 150 ml - 5.3 Fl. Oz.



**BEACH TOWEL**  
70 cm x 160 cm  
ART. 19025



**BES SOLAIRE CLIENT FOLDER**  
ART. 19029 - IT - CS  
ART. 19030 - EN - ES



**BES SOLAIRE DESK EXPO**  
20 cm x 15 cm x h 30 cm  
ART. 19032



**BES SOLAIRE WOOD SURF EXPO**  
52 cm x 43 cm x h 163 cm  
ART. 19028

## SI - PERM

LINEA DI ONDULAZIONE PERMANENTE

PERMANENT WAVING LINE



**SIPERM WAVE**  
0 STRONG ART. 09400 - 1000 ml - 35.2 Fl. Oz.  
1 MEDIUM ART. 09401 - 1000 ml - 35.2 Fl. Oz.  
2 GENTLE ART. 09402 - 1000 ml - 35.2 Fl. Oz.

**SIFIX NEUTRALIZER**  
ART. 09412 - 1000 ml - 35.2 Fl. Oz.

## MOVIE

LINEA DI ONDULAZIONE PERMANENTE

PERMANENT WAVING LINE



**MOVIE WAVE**  
1 STRONG ART. 09501 - 250 ml - 8.8 Fl. Oz.  
2 MEDIUM ART. 09502 - 250 ml - 8.8 Fl. Oz.  
3 SOFT ART. 09503 - 250 ml - 8.8 Fl. Oz.

**MOVIE NEUTRALIZER**  
ART. 09512 - 1000 ml - 35.2 Fl. Oz.

## Specific wave

LINEA DI ONDULAZIONE PERMANENTE

PERMANENT WAVING LINE



**SPECIFIC WAVE KIT**  
1 NATURAL ART. 09601  
2 SENSITIVE ART. 09602  
EACH KIT CONTAINS:  
1 PC. WAVING SOLUTION 120 ml - 4.2 Fl. Oz.  
1 PC. WAVING NEUTRALIZER 120 ml - 4.2 Fl. Oz.



**SPECIFIC WAVE MECHEES KIT**  
ART. 09603  
EACH KIT CONTAINS:  
1 PC. EQUILIBRAT SHAMPOO 40 ml - 1.4 Fl. Oz. + 1 PC. EQUALWAVE BALANCING EMULSION 40 ml - 1.4 Fl. Oz.  
1 PC. WAVING SOLUTION 120 ml - 4.2 Fl. Oz. + 1 PC. NEUTRALIZER 120 ml - 4.2 Fl. Oz.

## SI - STRAIGHT

LINEA DI STIRATURA PERMANENTE

PERMANENT STRAIGHTENING LINE



**SI STRAIGHT CREAM KIT**  
MEDIUM ART. 09701  
STRONG ART. 09702  
EACH KIT CONTAINS:  
1 PC. STRAIGHTENING CREAM 100 ml - 3.5 Fl. Oz.  
1 PC. NEUTRALIZER 120 ml - 4.2 Fl. Oz. + 1 PC. ACID LOTION pH 2,5 - 40 ml - 1.4 Fl. Oz.



**KIT WAVE & VOLUME**  
51 cm x 9 cm x h 39 cm  
ART. 13854



**KIT STRAIGHTENING FILM**  
45 cm x 1 cm x h 29 cm  
ART. 13855



**PROFESSIONAL TEXTURE**  
30 cm x h 21 cm  
ART. 13876 - IT - EN  
ART. 13877 - FR - NL  
ART. 13878 - ES - CS



**C1 BULBOTON**  
ACTIVE SHAMPOO HAIR LOSS PREVENTION  
ART. 12713 - 60 ml - 2.1 Fl. Oz.  
ART. 10615 - 300 ml - 10.5 Fl. Oz.  
ART. 10616 - 1000 ml - 35.2 Fl. Oz.



**C2 BULBOTON**  
ACTIVE LOTION HAIR LOSS PREVENTION  
ART. 10617 - 120 ml - 4.2 Fl. Oz.  
(Box 12 phials x 10 ml - 0.35 Fl. Oz. each)



**F1 DANDRUFF ACTIVE SHAMPOO**  
ART. 10116 - 300 ml - 10.5 Fl. Oz.  
ART. 10112 - 1000 ml - 35.2 Fl. Oz.



**F2 DANDRUFF ACTIVE LOTION**  
ART. 10125 - 120 ml - 4.2 Fl. Oz.  
(Box 12 phials x 10 ml - 0.35 Fl. Oz. each)



**R1 REPAIR**  
PRIMER SHAMPOO  
ART. 12714 - 60 ml - 2.1 Fl. Oz.  
ART. 12701 - 300 ml - 10.5 Fl. Oz.  
ART. 12700 - 1000 ml - 35.2 Fl. Oz.



**R2 REPAIR**  
MAGIC POTION  
ART. 12703 - 250 ml - 8.8 Fl. Oz.  
ART. 12702 - 500 ml - 17.6 Fl. Oz.



**R3 REPAIR**  
BALANCING SEAL  
ART. 12715 - 60 ml - 2.1 Fl. Oz.  
ART. 12705 - 300 ml - 10.5 Fl. Oz.  
ART. 12704 - 1000 ml - 35.2 Fl. Oz.



**R4 REPAIR**  
SHIMMER SHIELD  
ART. 12707 - 50 ml - 1.7 Fl. Oz.  
ART. 12706 - 100 ml - 3.5 Fl. Oz.



**R5 REPAIR**  
OIL THERAPY  
ART. 12709 - 50 ml - 1.7 Fl. Oz.  
ART. 12708 - 100 ml - 3.5 Fl. Oz.



**R6 REPAIR**  
TONUS LOTION  
ART. 12710 - 120 ml - 4.2 Fl. Oz.  
(Box 12 phials x 10 ml - 0.35 Fl. Oz. each)



**N1 NOURISHING SHAMPOO**  
FOR DRY, BLEACHED AND DAMAGED HAIR  
ART. 12716 - 60 ml - 2.1 Fl. Oz.  
ART. 12608 - 300 ml - 10.5 Fl. Oz.  
ART. 12609 - 1000 ml - 35.2 Fl. Oz.



**N2 NOURISHING CONDITIONER**  
FOR DRY, BLEACHED AND DAMAGED HAIR  
ART. 12717 - 60 ml - 2.1 Fl. Oz.  
ART. 12610 - 300 ml - 10.5 Fl. Oz.  
ART. 12611 - 1000 ml - 35.2 Fl. Oz.



**N3 NOURISHING CREAM**  
FOR DRY, BLEACHED AND DAMAGED HAIR  
ART. 12607 - 250 ml - 8.8 Fl. Oz.  
ART. 12606 - 500 ml - 17.6 Fl. Oz.  
ART. 12605 - 1000 ml - 35.2 Fl. Oz.



**N4 NOURISHING**  
MINERALIZING SERUM WITH LINSEEDS  
ART. 10619 - 120 ml - 4.2 Fl. Oz.  
(Box 12 phials x 10 ml - 0.35 Fl. Oz. each)



**N5 NOURISHING PLACENTA SEB**  
RESTRUCTURING TREATMENT ACTIVE LOTION  
ART. 12037 - 120 ml - 4.2 Fl. Oz.  
(Box 12 phials x 10 ml - 0.35 Fl. Oz. each)



**S1 SEBO-REGULATOR**  
ACTIVE SHAMPOO  
ART. 10115 - 300 ml - 10.5 Fl. Oz.  
ART. 10111 - 1000 ml - 35.2 Fl. Oz.



**S2 SEBO-REGULATOR**  
ACTIVE LOTION  
ART. 10126 - 120 ml - 4.2 Fl. Oz.  
(Box 12 phials x 10 ml - 0.35 Fl. Oz. each)



**D1 EQUALIZER SHAMPOO**  
ART. 12712 - 60 ml - 2.1 Fl. Oz.  
ART. 10011 - 1000 ml - 35.2 Fl. Oz.  
ART. 10012 - 5000 ml - 176 Fl. Oz.  
ART. 10013 - 10000 ml - 352 Fl. Oz.



**D2 RESTITUTIVE CONDITIONER**  
ART. 12120 - 300 ml - 10.5 Fl. Oz.  
ART. 12102 - 1000 ml - 35.2 Fl. Oz.  
ART. 12125 - 5000 ml - 176 Fl. Oz.



**D3 TONIFICANTE SHAMPOO**  
ART. 10117 - 300 ml - 10.5 Fl. Oz.  
ART. 10113 - 1000 ml - 35.2 Fl. Oz.



**D4 RISTRUTTURANTE SHAMPOO**  
ART. 10118 - 300 ml - 10.5 Fl. Oz.  
ART. 10114 - 1000 ml - 35.2 Fl. Oz.



**ENVELOPE** 10 + 10 ml  
ART. 10127 R1 + R3  
ART. 10128 N1 + N2  
ART. 10129 D1 + D2



**MINI SIZE TRAVEL KIT**  
6 x 60 ml  
ART. 12711



**SALON FOLDER**  
30 cm x 30 cm  
ART. 13535 IT-ES-CS  
ART. 13537 EN-FR-NL



**CLIENT LEAFLET**  
10 cm x h 21 cm  
ART. 13536 IT-ES-CS  
ART. 13538 EN-FR-NL



**B1 COLOR TREATED, PERMED AND STRESSED HAIR SHAMPOO**  
ART. 21850 - 100 ml - 3.5 Fl. Oz.  
ART. 21800 - 400 ml - 14 Fl. Oz.  
ART. 21801 - 1000 ml - 35.2 Fl. Oz.



**B2 ENERGIZING AND FORTIFYING MASK**  
ART. 21802 - 400 ml - 14 Fl. Oz.



**B3 COLOR TREATED, PERMED AND STRESSED OVER PROCESSED HAIR LEAVE IN TREATMENT**  
ART. 21851 - 100 ml - 3.5 Fl. Oz.  
ART. 21803 - 400 ml - 14 Fl. Oz.  
ART. 21804 - 1000 ml - 35.2 Fl. Oz.



**B4 FORTIFYING IMPACT TREATMENT**  
ART. 21805  
100 ml - 3.5 Fl. Oz.



**B5 ENERGIZING INTENSIVE SERUM**  
ART. 21806  
100 ml - 3.5 Fl. Oz.



**S1 DANDRUFF SHAMPOO**  
ART. 21852 - 100 ml - 3.5 Fl. Oz.  
ART. 21807 - 400 ml - 14 Fl. Oz.  
ART. 21808 - 1000 ml - 35.2 Fl. Oz.



**S2 SEVERE DANDRUFF STATES LOTION**  
ART. 21809 - 100 ml - 3.5 Fl. Oz.



**V1 HAIR FALLING SHAMPOO**  
ART. 21853 - 100 ml - 3.5 Fl. Oz.  
ART. 21810 - 400 ml - 14 Fl. Oz.  
ART. 21811 - 1000 ml - 35.2 Fl. Oz.



**V2 HAIR FALLING LOTION**  
ART. 21812 - 100 ml - 3.5 Fl. Oz.



**P1 SEBUM BALANCING SHAMPOO**  
ART. 21854 - 100 ml - 3.5 Fl. Oz.  
ART. 21813 - 400 ml - 14 Fl. Oz.  
ART. 21814 - 1000 ml - 35.2 Fl. Oz.



**P2 SEBUM BALANCING LOTION**  
ART. 21815 - 100 ml - 3.5 Fl. Oz.



**G1 INTENSIVE NOURISHING SHAMPOO**  
ART. 21855 - 100 ml - 3.5 Fl. Oz.  
ART. 21816 - 400 ml - 14 Fl. Oz.  
ART. 21817 - 1000 ml - 35.2 Fl. Oz.



**G2 INTENSIVE NOURISHING MASK**  
ART. 21818 - 400 ml - 14 Fl. Oz.



**G3 INTENSIVE NOURISHING BALM**  
ART. 21856 - 100 ml - 3.5 Fl. Oz.  
ART. 21819 - 400 ml - 14 Fl. Oz.  
ART. 21820 - 1000 ml - 35.2 Fl. Oz.



**G4 PROTECTIVE & RESTRUCTURING OIL**  
ART. 21821 - 100 ml - 3.5 Fl. Oz.



**G5 NOURISHING & MULTIACTIVE FLUID**  
ART. 21822 - 50 ml - 1.7 Fl. Oz.



**G6 INTENSIVE NOURISHING SERUM**  
ART. 21823 - 100 ml - 3.5 Fl. Oz.



**R1 DETOXIFYING LOTION**  
ART. 21824  
100 ml - 3.5 Fl. Oz.



**R2 PURIFYING CONCENTRATE**  
ART. 21825  
1000 ml - 35.2 Fl. Oz.



**R3 ACTIVE CLAY**  
ART. 21826 - 400 g - 14 oz.  
(Box 10 envelopes  
x 40 g - 1.4 oz. each)



**R4 ESSENTIAL PURIFYING ELIXIR**  
ART. 21827  
50 ml - 1.7 Fl. Oz.



**R5 ESSENTIAL ACTIVATOR ELIXIR**  
ART. 21828  
50 ml - 1.7 Fl. Oz.



**R6 ESSENTIAL SCALP SOOTHING ELIXIR**  
ART. 21829  
50 ml - 1.7 Fl. Oz.



**R7 ESSENTIAL ENERGIZING AND REBUILDING ELIXIR**  
ART. 21830  
50 ml - 1.7 Fl. Oz.



**R8 SCALP SOOTHING GOMMAGE**  
ART. 21831  
100 ml - 3.5 Fl. Oz.



**R9 EXFOLIATING PEELING**  
ART. 21832  
100 ml - 3.5 Fl. Oz.



**LEAFLETS' EXPO IN CARDBOARD**  
16 x 12 x h 30 cm  
Art. 21858



**Desk Expo Blue Line in Cardboard**  
27 x 45,5 x h 27 cm  
Art. 49027



**Desk Expo Gold Line in Cardboard**  
27 x 45,5 x h 27 cm  
Art. 49028



**Desk Expo Pink - Violet - Silver Line in Cardboard**  
20 x 30 x h 27 cm  
Art. 49030



**Desk Expo Red Line in Cardboard**  
30 x 45,5 x h 27 cm  
Art. 49029



**LARGE BRUSH**  
Art. 49019



**NARROW BRUSH**  
Art. 49018



**HANDLE COMB**  
Art. 49014



**LONG COMB**  
Art. 49020



**BOWL Ø 13 CM**  
Art. 49013



**COMB + TREATMENT BRUSH**  
Art. 49016



**SHORT COMB**  
Art. 49021



**TREATMENT BRUSH**  
Art. 49017



**SPATULA**  
Art. 49015



**HEADBAND**  
Art. 49006



**WASHCLOTH GLOVE**  
Art. 49007



**TOWEL**  
50 cm x 100 cm  
Art. 49002



**BEACH TOWEL**  
100 cm x 200 cm  
Art. 49001



**SLIPPERS**  
Size M/L  
Art. 49011/12

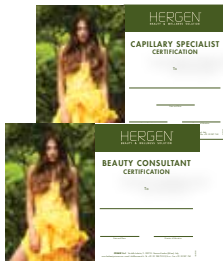


**TURBAN**  
Art. 49004

**BATHROBE**  
Size L/XL/XXL  
Art. 49008/9/10



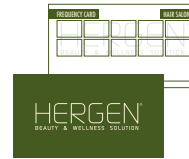
**BEAUTY BOOK**  
27,5 x 33 x h 5,5 cm  
Art. 21843 - I - E  
Art. 21848 - GB - F  
Art. 21849 - RU - CZ



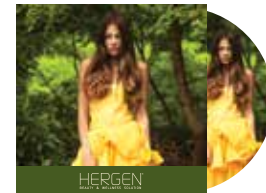
**CERTIFICATION**  
21 x 29,7 cm  
Art. 21841 - CAPILLARY SPECIALIST  
Art. 21842 - BEAUTY CONSULTANT



**WINDOW STICKER**  
21 x h 15 cm  
Art. 49025



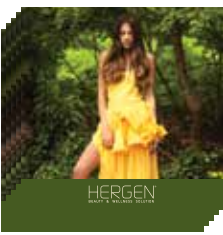
**FREQUENCY CARD**  
9 x h 5 cm  
Art. 21841



**EDUCATIONAL VIDEO**  
12 x 12 cm  
Art. 21857



**WIRELESS MICROCAMERA**  
Art. 49024



**HAIR SALON FOLDER**  
30 x 30 cm  
Art. 21837 - IT-EN-FR-ES-CS-RU  
Art. 21841 - IT-EN-FR-ES-CS-NL



**CLIENT LEAFLET**  
10,5 x h 21 cm  
Art. 21838 - IT-EN-FR-ES-CS-RU  
Art. 21845 - IT-EN-FR-ES-CS-NL



**ENVELOPE**  
B1 15 ml 0.52 Fl. Oz.  
B2 15 ml 0.52 Fl. Oz.  
Art. 21846

**ENVELOPE**  
G1 15 ml 0.52 Fl. Oz.  
G2 15 ml 0.52 Fl. Oz.  
Art. 21847



**PROMO BOX**  
21 x 16,5 x h 22 cm  
Art. 49023



**SHOPPER**  
10,5 x 25 x h 34,5 cm  
Art. 49022

HERGEN	ANUNCIU SA FOTOGRAFIE	ANUNCIU SA VIDEO	ANUNCIU SA AUDIO	ANUNCIU SA TEXT	ANUNCIU SA VIDEO + AUDIO	ANUNCIU SA VIDEO + AUDIO + TEXT
BLUE LINE						
GREEN LINE						
PURPLE LINE						
PINK LINE						
ORANGE LINE						
RED LINE						

**TECHNICAL POSTER**  
70 cm x h 50 cm  
Art. 21839



**ROLL-UP BANNER**  
80 cm x h 205 cm  
Art. 47019  
20/21/22/23/24/25/26/27



**FLOOR EXPO ROTATING WOOD**  
52 cm x 52 cm x h 200 cm  
Art. 21835



**FLOOR EXPO WOOD**  
50 cm x 35 cm x h 194 cm  
Art. 21836



**FLOOR EXPO IN CARDBOARD + WOOD**  
43 cm x 65 cm x h 159 cm  
Art. 49026



PROFESSIONAL  
HAIRFASHION

PHF

STYLING



**HAIR SALON FOLDER FOLDER**  
30 x 30 cm  
Art. 33026 - IT-EN-FR-ES-CS-RU  
Art. 3303 - FR-NL-RO-HU-PL-BG



**CLIENT LEAFLET**  
10,5 x h 21 cm  
Art. 33025 - IT-EN-FR-ES-CS-RU  
Art. 33030 - FR-NL-RO-HU-PL-BG



**PROMOTIONAL CASE 13 PRODUCTS**  
51 cm x 6,5 cm x h 40 cm  
Art. 33032



**GROUND EXPO**  
44 cm x 24 cm x h 160 cm  
Art. 33028

**BES PHF COMPLET KIT**

CONTAINS:

- 1 PC - BES PHF TOTEM 50 cm x h 157 cm
- 1 PC - BES PHF CUBE A 34 cm x 34 cm x 34 cm
- 1 PC - BES PHF CUBE B 34 cm x 34 cm x 34 cm
- 1 PC - BES PHF EXPO CUBE 34 cm x 34 cm x 34 cm
- 1 PC - BES PHF TAKEONE 30 cm x h 30 cm
- 1 PC - BES PHF FOLDER 30 cm x 30 cm
- 24 PCS - BES PHF LEAFLET 10,5 cm x h 21 cm

COD. ART. 33024



**DESK EXPO GEL + CERA + BLACK GEL + 12 LEAFLET**  
29 cm x 31 cm x h 29 cm  
Art. 47060



**DESK EXPO FRIZZ, CURL, EXTREME + 12 LEAFLET**  
22 cm x 25 cm x h 35 cm  
Art. 33063



**DESK EXPO #12 IN 1 + 12 LEAFLET**  
22 cm x 25 cm x h 35 cm  
Art. 33062



**BANNER ROLL-UP 12 in 1**  
80 cm x h 200 cm  
ART. 47134 - IT  
ART. 47135 - EN



**PHF SHOPPER MAT PLASTIC RIGID CARDBOARD**  
25 cm x 25 cm h 45 cm  
Art. 33059

PROFESSIONAL  
HAIRFASHION

PHF

HAIR CARE



**PHF COLOR**  
SHAMPOO ART. 33033 - 1000 ml - 35.2 Fl. Oz.  
SHAMPOO ART. 33037 - 300 ml - 10.5 Fl. Oz.  
CONDITIONER ART. 33041 - 1000 ml - 35.2 fl. oz  
CONDITIONER ART. 33045 - 300 ml - 10.5 Fl. Oz.



**PHF CURL**  
SHAMPOO ART. 33034 - 1000 ml - 35.2 Fl. Oz.  
SHAMPOO ART. 33038 - 300 ml - 10.5 Fl. Oz.  
CONDITIONER ART. 33042 - 1000 ml - 35.2 fl. oz  
CONDITIONER ART. 33046 - 300 ml - 10.5 Fl. Oz.



**PHF SMOOTH**  
SHAMPOO ART. 33035 - 1000 ml - 35.2 Fl. Oz.  
SHAMPOO ART. 33039 - 300 ml - 10.5 Fl. Oz.  
CONDITIONER ART. 33043 - 1000 ml - 35.2 fl. oz  
CONDITIONER ART. 33047 - 300 ml - 10.5 Fl. Oz.



**PHF VOLUME**  
SHAMPOO ART. 33036 - 1000 ml - 35.2 Fl. Oz.  
SHAMPOO ART. 33040 - 300 ml - 10.5 Fl. Oz.  
CONDITIONER ART. 33044 - 1000 ml - 35.2 fl. oz  
CONDITIONER ART. 33048 - 300 ml - 10.5 Fl. Oz.



**DESK EXPO BES PHF HAIR CARE KIT**  
- 1 EXPO, 1 BROCHURE, 12 LEAFLETS  
ART. 33055



**BANNER ROLL-UP**  
80 cm x h 200 cm  
ART. 47014  
15/16/17/18



**POSTER**  
70 x h 100 cm  
ART. 39023  
24/25/26/27



**HAIR SALON FOLDER**  
30 x 30 cm  
Art. 33050 - IT-EN-FR-ES-CS-RU  
Art. 33057 - EN-FR-NL-HU-SK-RO



**CLIENT LEAFLET**  
10,5 x h 21 cm  
Art. 33049 - IT-EN-FR-ES-CS-RU  
Art. 33056 - EN-FR-NL-HU-SK-RO



PROFESSIONAL  
HAIR FASHION

PHF  
STYLING

**BES Professional Hair Fashion** è una linea di prodotti styling creata in esclusiva da Bes Beauty & Science per gli stilisti acconciatori più esigenti, un vero e proprio concetto di bellezza, stile ed eleganza. La linea contiene olio di Argan, estratto di Maracuja e Pantenolo. BES Professional Hair Fashion è il nuovo concetto di fare moda, ma anche di proteggere e di donare forza e struttura al capello. E' composta da specifici prodotti, appositamente formulati, affinché l'acconciatore possa avere la massima libertà d'azione e la larga scelta per individuare il prodotto più idoneo alla natura del capello da trattare e al look desiderato. Molto importante, per l'acconciatore, è anche la possibilità di miscelare tra loro alcuni prodotti in modo da ottenere diverse caratteristiche, funzioni di forza, bellezza e benessere determinati dai principi attivi contenuti nelle formulazioni.

L'olio di Argan, sostanza preziosa, contiene acido linoleico e vitamina E che hanno la capacità di stimolare le funzioni vitali delle cellule della cute e mantenere l'esatto equilibrio idro-lipidico del capello, molto importante per il suo vigore e la sua bellezza. Maracuja è un frutto esotico che contiene Vitamina A, B 12, proteine, fosforo e ferro che danno nutrimento e sostengono il capello. Il Pantenolo, provitamina B5, fortifica e dona lucentezza ai capelli, idratando e proteggendo il cuoio capelluto. La linea BES Professional Hair Fashion è una linea di prodotti finali con notevoli proprietà cosmetiche che rispettano e proteggono il capello. La nota olfattiva dona una sensazione di freschezza e naturalezza.

**BES Professional Hair Fashion** is a line of styling products created in exclusivity by BES Beauty & Science for the most exigent hairstylists, a new concept of beauty, style and elegance. The line contains Argan Oil, Maracuja Extract and Panthenol. BES Professional Hair Fashion is the new concept of creating fashion, by improving the health and giving a better look to the hair. It is composed by specific products specially formulated to give extraordinary freedom to the hairstylist who has the possibility to choose the best products according to the hair and the desired look. All the products of the BES Professional Hair Fashion can be mixed with each other to obtain different features, beauty and results. Argan Oil, precious substance, contains linoleic acid and vitamin E which stimulate the vital functions of cells and they maintain the exact hydro-lipidic balance of the hair. Maracuja is an exotic fruit that contains vitamin A, vitamin B12, proteins, phosphorus and iron which give nourishment and support to the hair. Panthenol, provitamin B5, strengthens and gives shine to the hair, hydrating and protecting the scalp. The BES Professional Hair Fashion is a line of styling products with remarkable cosmetic properties that respect and protect the hair. The scent of the line gives a sensation of freshness and freedom.



**ROOT SUPPORT**  
**ROOT LIFTING MOUSSE**  
ART. 33082 - 300 ml - 10.5 Fl. Oz.



**DYNAMIC MOUSSE**  
**NATURAL HOLD TREATED HAIR**  
ART. 33083 - 300 ml - 10.5 Fl. Oz.



**TEXTURIZING**  
**& VOLUMIZING MOUSSE**  
ART. 33085 - 250 ml - 8.8 Fl. Oz.



**CUTTING POTION**  
ART. 33003  
500 ml - 17.6 Fl. Oz.



**SUPER GLUE**  
ART. 33004  
200 ml - 7 Fl. Oz.



**FIBER FLUID**  
ART. 33005  
200 ml - 7 Fl. Oz.



**FRIZZ CONTROL**  
ART. 33006  
100 ml - 3.5 Fl. Oz.



**RUBBER CREAM**  
ART. 33007  
100 ml - 3.5 Fl. Oz.



**GLOSS THERAPY**  
ART. 33008  
50 ml - 1.7 Fl. Oz.



**SHAPER GLUE**  
ART. 33009  
250 ml - 8.8 Fl. Oz.



**SCULPTING POMADE**  
ART. 33010  
50 ml - 1.7 Fl. Oz.



**MATTE PASTE**  
ART. 33011  
50 ml - 1.7 Fl. Oz.



**CURL ACTIVATOR**  
ART. 33012  
200 ml - 7 Fl. Oz.



**EXTREME SHINE**  
ART. 33013  
100 ml - 3.5 Fl. Oz.



**STYLING HAIR SPRAY**  
**STRONG HOLD**  
ART. 33014 - 500 ml - 17.6 Fl. Oz.



**STYLING HAIR SPRAY**  
**DYNAMIC INVISIBLE STRONG**  
ART. 33015 - 500 ml - 17.6 Fl. Oz.



**STYLING HAIR SPRAY**  
**STRONG HOLD NO GAS**  
ART. 33084 - 300 ml - 10.5 Fl. Oz.



**DYNAMIC**  
**SUPER HOLD GEL**  
ART. 33017 - 200 ml - 7 Fl. Oz.



**STYLING HAIR SPRAY**  
ART. 33018  
400 ml - 14 Fl. Oz.



**BES IN BLACK**  
ART. 33019  
170 ml - 6 Fl. Oz.



**WATER WAX**  
ART. 33058  
100 ml - 3.5 Fl. Oz.



**#12in1 INSTANT MOISTURIZING**  
**STYLING HAIR MASK**  
ART. 33061 - 150 ml - 5.3 Fl. Oz.



**DYNAMIC FIXAGE**  
**SET & BRUSH**  
ART. 33064 - 576 ml - 20.27 Fl. Oz.  
(Box of 36 phials x 16 ml - 0.563 Fl. Oz.)



**STYLING HAIR SPRAY**  
**DYNAMIC INVISIBLE STRONG**  
ART. 33065 - 100 ml - 3.5 Fl. Oz.



**VITAMIN BODY MASSAGE OIL**  
ART. 70065 - 1000 ml - 35.2 Fl. Oz.



**NATURAL LUXURY BODY CREAM**  
ART. 70067 - 250 ml - 8.8 Fl. Oz.



**RELAXING BODY MIST**  
ART. 70068 - 200 ml - 7 Fl. Oz.



**NOURISHING AND PROTECTIVE HAND CREAM**  
ART. 70069 - 100 ml - 3.5 Fl. Oz.



**DESK EXPO NOURISHING AND PROTECTIVE HAND CREAM + 12 LEAFLET**  
22 cm x 25 cm x h 35 cm  
Art. 70070



**COOL MINT & ROSEMARY SHAKE SHAMPOO** ART. 70001 - 250 ml - 8.8 Fl. Oz.



**STRAWBERRY & YOGHURT FLOAT SHAMPOO** ART. 70002 - 250 ml - 8.8 Fl. Oz.



**TANTALISING PISTACHIO CREAM CONDITIONER** ART. 70003 - 200 ml - 7 Fl. Oz.



**COCONUT & BANANA SPLIT MASK** ART. 70004 - 250 ml - 8.8 Fl. Oz.



**BLUEBERRY ICE POMADE** ART. 70005 - 50 ml - 1.7 Fl. Oz.



**PUCKER - UP LEMON SHERBET WAX** ART. 70006 - 50 ml - 1.7 Fl. Oz.



**CINNAMON & VANILLA FLUFF MOUSSE** ART. 70007 - 200 ml - 7 Fl. Oz.



**TANGY MANDARIN ORANGE CRUSH GEL** ART. 70008 - 200 ml - 7 Fl. Oz.



**VOLUMINOUS BUBBLE GUM SHAMPOO** ART. 70014 - 250 ml - 8.8 Fl. Oz.



**LAVISHLY LIQUORICE SHAMPOO** ART. 70015 - 250 ml - 8.8 Fl. Oz.



**POWDER SUGAR PUFF CREAM CONDITIONER** ART. 70016 - 200 ml - 7 Fl. Oz.

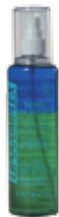


**QUENCHING PAPAYA MASK** ART. 70017 - 250 ml - 8.8 Fl. Oz.

**LIPOCOMPLEX**



**RESTRUCTURING LOTION**  
ART. 56406 - 144 ml - 5.04 Fl. Oz.  
(Box 12 phials x 12 ml - 0.42 Fl. Oz. each)



**VOLUMIZING CONDITIONER**  
ART. 56403  
200 ml - 7 Fl. Oz.



**NEUTRAL SHAMPOO**  
ART. 56426  
200 ml - 7 Fl. Oz.



**OIL BATH**  
ART. 56419  
200 ml - 7 Fl. Oz.



**HAIR MASK**  
ART. 56402  
200 ml - 7 Fl. Oz.



**ACTIVE SHINE**  
ART. 56407  
50 ml - 1.7 Fl. Oz.



**HERGEN SHAMPOO PINK FOR ALL KINDS OF HAIR**  
ART. 21606 - 10000 ml - 352 Fl. Oz.



**HERGEN SHAMPOO YELLOW FOR ALL KINDS OF HAIR**  
ART. 21607 - 10000 ml - 352 Fl. Oz.



**HERGEN SHAMPOO VIOLET FOR ALL KINDS OF HAIR**  
ART. 21608 - 10000 ml - 352 Fl. Oz.



**HERGEN SHAMPOO ORANGE FOR ALL KINDS OF HAIR**  
ART. 21609 - 10000 ml - 352 Fl. Oz.



**BES SPECIAL SHAMPOO FOR ALL KINDS OF HAIR**  
ART. 08097 - 10000 ml - 352 Fl. Oz.

SPECIAL EFFECT COUNTER EXPO  
4 PCS.. VOLUMIZING FOAM + 4 PCS.. ROOT SUPPORT + 4 PCS. THICKER IS BETTER  
ART. 32030

SPECIAL EFFECT COUNTER EXPO  
4 PCS.. VOLUMIZING FOAM + 4 PCS.. ROOT SUPPORT + 4 PCS. THICKER IS BETTER  
ART. 32031

SPECIAL EFFECT COUNTER EXPO  
6 PCS.. CURLY Q + 6 PCS.. MOUSSE WAX  
ART. 32032

SPECIAL EFFECT COUNTER  
EXPO 2 PCS. X REF. 11/12/13/19/23/25  
ART. 32033

SPECIAL EFFECT COUNTER EXPO  
6 PCS. STRAIGHT ARROW + 6 PCS.. FRIZZAWAY  
ART. 32034



**SPECIAL EFFECT COLUMN EXPO  
METAL + CRYSTAL**  
50 cm x 35 cm x h 200 cm  
ART. 32096

**SCULPTING**



**8 RUBBER - IZED**  
SCULPTING RUBBER  
ART. 32008 - 100 ml - 3.5 Fl. Oz.



**22 PLASTER - IZED**  
SCULPTING PASTE  
ART. 32022 - 100 ml - 3.5 Fl. Oz.



**10 URBAN TAMER**  
SCULPTING WAX  
ART. 32010 - 100 ml - 3.5 Fl. Oz.



**25 WILD TEXTURE**  
SCULPTING CREAM  
ART. 32025 - 200 ml - 7 Fl. Oz.

**GLOSS**



**7 LIGHT & SHINE**  
SHINING SPRAY  
ART. 32007 - 125 ml - 4.4 Fl. Oz.



**6 ACTIVE SHINE**  
SHINE AND VOLUME CONCENTRATE  
ART. 32006 - 50 ml - 1.7 Fl. Oz.



**20 URBAN GLAZER**  
LUMINANCE WAX  
ART. 32020 - 100 ml - 3.5 Fl. Oz.

**STRAIGHT-ANTIFRIZZ**



**5 FRIZZAWAY**  
ANTI-FRIZZ SERUM  
ART. 32005 - 125 ml - 4.4 Fl. Oz.



**15 STRAIGHT ARROW**  
MOISTURE PROOF STRAIGHTENING BALM  
ART. 32015 - 200 ml - 7 Fl. Oz.

**CURLS**



**14 MOUSSE WAX**  
CURL ACTIVATOR MOUSSE  
ART. 32014 - 200 ml - 7 Fl. Oz.



**16 CURLY-Q**  
CURL ACTIVATOR CREAM  
ART. 32016 - 200 ml - 7 Fl. Oz.

**VOLUME**



**3 VOLUMIZING FOAM**  
VOLUME AND CONTROL MOUSSE  
ART. 32003 - 200 ml - 7 Fl. Oz.



**24 THICKER IS BETTER**  
VOLUMIZING POTION  
ART. 32024 - 200 ml - 7 Fl. Oz.

**STYLING**



**2 INVISIBLE MIST**  
STRONG HOLD HAIR SPRAY  
ART. 32002 - 500 ml - 17.6 Fl. Oz.



**9 URBAN POWER**  
LUMINANCE PASTE  
ART. 32009 - 100 ml - 3.5 Fl. Oz.



**21 INSPIRATIONS NO GAS**  
MEDIUM HOLD HAIR SPRAY  
ART. 32021 - 300 ml - 10.5 Fl. Oz.



**17 SPRAY-ON**  
TEXTURE FIRM HOLD  
ART. 32017 - 200 ml - 7 Fl. Oz.



**18 SPRAY-ON**  
TEXTURE MEDIUM HOLD  
ART. 32018 - 200 ml - 7 Fl. Oz.



**11 HOLD-IT**  
PROTECTIVE STRONG HOLD GEL  
ART. 32011 - 200 ml - 7 Fl. Oz.



**12 GLUE-IT**  
STRUCTURAL FIBER GEL  
ART. 32012 - 200 ml - 7 Fl. Oz.



**13 NOURISH-IT**  
NOURISHING GEL CREAM  
ART. 32013 - 200 ml - 7 Fl. Oz.



**19 WET-IT**  
WET LOOK GEL  
ART. 32019 - 200 ml - 7 Fl. Oz.



**23 GLOSS-IT**  
VOLUME AND GLOSS GEL  
ART. 32023 - 200 ml - 7 Fl. Oz.

**BES**  
BEAUTY & SCIENCE

FRAGRANCE  
SHAMPOO - MASK



FOLDER SHAMPOO + MASK  
30 cm x h 21 cm  
ART. 27060



FOLDER SHAMPOO  
30 cm x h 21 cm  
ART. 27033



CLIENT LEAFLET



EMPTY DESK EXPO SHAMPOO + MASK 300 ml  
+ 12 LEAFLET BES FRAGRANCE  
22 cm x 25 cm x h 35 cm  
ART. 27059



EMPTY DESK EXPO SHAMPOO 300 ml + 12 LEAFLET BES FRAGRANCE  
22 cm x 25 cm x h 35 cm  
ART. 27030



CLIENT LEAFLET



EMPTY DESK SHAMPOO EXPO 100 ml  
35 cm x 13 cm x h 26 cm  
ART. 27031

Nasce dall'esigenza di offrire uno shampoo professionale di alta qualità che sia adatto a qualsiasi tipo di capello.

Grazie alla delicatezza della sua formulazione, BES FRAGRANCE shampoo può essere utilizzato quotidianamente.

Deterge in profondità mantenendo le caratteristiche fisiologiche di cute e capelli.

Districa e nutre senza seccare, ungere o appesantire il capello.

Migliora l'aspetto, la pettinabilità e la scorrevolezza dei capelli.

The new BES FRAGRANCE line arises from the need to offer a high quality professional shampoo that is suitable for any type of hair.

Its gentle and delicate formulation, allows the line to be used daily as a back wash shampoo.

It deeply cleanses hair and scalp maintaining their physiological characteristics.

It detangles and nourishes without drying.

It improves the appearance, manageability and smoothness of the hair.

**BES**  
BEAUTY & SCIENCE

# FRAGRANCE

## SHAMPOO-MASK

Maschera nutriente ed idratante per tutti i tipi di capelli.

Ripristina il pH cuticolare diminuendo la porosità del capello.

ARRICCHITA CON BURRO DI KARITÉ, ripara le aree danneggiate della fibra capillare, apportando nuova forza, vitalità e morbidezza.

Lascia i capelli idratati, lucenti e facilmente districabili.

CON OLIO DI MACADAMIA.

Nourishing and moisturizing hair mask for all hair types.

It restores the cuticular pH by decreasing the porosity of the hair.

ENRICHED WITH SHEA BUTTER, it repairs damaged areas of the hair fiber, bringing new strength, vitality and softness.

It leaves the hair hydrated, shiny and easily detangled.

WITH MACADAMIA OIL.

<p><b>PAPAYA AND GOJI</b></p> <p>SHAMPOO ART. 27000 - 100 ml 3.5 Fl. Oz. SHAMPOO ART. 27001 - 300 ml 10.5 Fl. Oz. SHAMPOO ART. 27002 - 1000 ml 35.2 Fl. Oz. SHAMPOO ART. 27003 - 3000 ml 105.6 Fl. Oz.</p> <p>MASK ART. 27040 - 300 ml 10.5 Fl. Oz. MASK ART. 27041 - 1000 ml 35.2 Fl. Oz. MASK ART. 27052 - 3000 ml 105.6 Fl. Oz.</p>	<p><b>LIQUORICE</b></p> <p>SHAMPOO ART. 27004 - 100 ml 3.5 Fl. Oz. SHAMPOO ART. 27005 - 300 ml 10.5 Fl. Oz. SHAMPOO ART. 27006 - 1000 ml 35.2 Fl. Oz. SHAMPOO ART. 27007 - 3000 ml 105.6 Fl. Oz.</p> <p>MASK ART. 27042 - 300 ml 10.5 Fl. Oz. MASK ART. 27043 - 1000 ml 35.2 Fl. Oz. MASK ART. 27053 - 3000 ml 105.6 Fl. Oz.</p>	<p><b>POMEGRANTE AND ALMOND</b></p> <p>SHAMPOO ART. 27008 - 100 ml 3.5 Fl. Oz. SHAMPOO ART. 27009 - 300 ml 10.5 Fl. Oz. SHAMPOO ART. 27010 - 1000 ml 35.2 Fl. Oz. SHAMPOO ART. 27011 - 3000 ml 105.6 Fl. Oz.</p> <p>MASK ART. 27044 - 300 ml 10.5 Fl. Oz. MASK ART. 27045 - 1000 ml 35.2 Fl. Oz. MASK ART. 27054 - 3000 ml 105.6 Fl. Oz.</p>	<p><b>PEACH ICE TEA</b></p> <p>SHAMPOO ART. 27012 - 100 ml 3.5 Fl. Oz. SHAMPOO ART. 27013 - 300 ml 10.5 Fl. Oz. SHAMPOO ART. 27014 - 1000 ml 35.2 Fl. Oz. SHAMPOO ART. 27015 - 3000 ml 105.6 Fl. Oz.</p> <p>MASK ART. 27046 - 300 ml 10.5 Fl. Oz. MASK ART. 27047 - 1000 ml 35.2 Fl. Oz. MASK ART. 27055 - 3000 ml 105.6 Fl. Oz.</p>	<p><b>MELON JUICE</b></p> <p>SHAMPOO ART. 27016 - 100 ml 3.5 Fl. Oz. SHAMPOO ART. 27017 - 300 ml 10.5 Fl. Oz. SHAMPOO ART. 27018 - 1000 ml 35.2 Fl. Oz. SHAMPOO ART. 27019 - 3000 ml 105.6 Fl. Oz.</p> <p>MASK ART. 27048 - 300 ml 10.5 Fl. Oz. MASK ART. 27049 - 1000 ml 35.2 Fl. Oz. MASK ART. 27056 - 3000 ml 105.6 Fl. Oz.</p>	<p><b>ORANGE CAKE</b></p> <p>SHAMPOO ART. 27020 - 100 ml 3.5 Fl. Oz. SHAMPOO ART. 27021 - 300 ml 10.5 Fl. Oz. SHAMPOO ART. 27022 - 1000 ml 35.2 Fl. Oz. SHAMPOO ART. 27023 - 3000 ml 105.6 Fl. Oz.</p> <p>MASK ART. 27050 - 300 ml 10.5 Fl. Oz. MASK ART. 27051 - 1000 ml 35.2 Fl. Oz. MASK ART. 27057 - 3000 ml 105.6 Fl. Oz.</p>
<p><b>100 ml</b></p> 					
<p><b>300 ml</b></p> 					
<p><b>1000 ml</b></p> 					
<p><b>3000 ml</b></p> 					

**ADVANCED  
TECHNOLOGY  
ACCESSORIES**



**KIT HAIR PAINTING** CONTAINS:  
10 PCS. COLOR LOCK LARGE  
20 PCS. COLOR LOCK MEDIUM  
30 PCS. COLOR LOCK SMALL  
12 PCS. VENETIAN BLIND  
3 PCS. CHROMATIC CIRCLE  
ART. 44002



**PHON BES BIONIK 5KV 2000W**  
ART. 13252



**Bes Kompact 2000w By BaBylissPro**  
ART. 13251



**HAIRDRYER HIGH POWER 2000 WATT  
BLACK COLOR**  
ART. 13204



**BES HAIRDRYER DIFFUSOR**  
COD. ART. 13255



**KURL & WAVE PACKAGE 12 CURLERS**  
ART. 13253



**NITRILE BLACK GLOVES 100 PCS.**  
ART. 40010 SMALL SIZE  
ART. 40011 MEDIUM SIZE  
ART. 40012 LARGE SIZE



**BIG BLACK BAG WITH WHITE LOGO**  
54 cm x 25 cm h 45 cm  
ART. 13984



**PLASTIC BLACK BAG WITH WHITE LOGO**  
30 cm x h 38 cm  
ART. 13970



**MOON SILVER BOWL**  
ART. 13602



**BRUSH**  
COD. ART. 13603



**BLACK COLOR CUP BOWL**  
ART. 13126



**COLOR CUP RECHARGE**  
ART. 13027



**DISPOSABLE PLASTIC CAPE  
(30 PCS. PLASTIC BAG)**  
ART. 13194



**HAIR CUTTING CAPE WITH FACE**  
134 cm x h 134 cm  
ART. 54001



**BLACK MULTI LOGO CAPE**  
120 cm x h 140 cm  
ART. 13383



**ORANGE SATIN CAPE**  
130 cm x h 130 cm  
ART. 13013



**VIOLET SATIN CAPE**  
130 cm x h 130 cm  
ART. 13014



**BLUE SATIN CAPE**  
130 cm x h 130 cm  
ART. 13015



**APRON BLACK**  
ART. 13451



**APRON SILVER**  
ART. 13452



**PEN**  
ART. 13914

**ACCESSORIES  
&  
TOOLS**



**TOWEL**  
48 cm x 88 cm  
COD. ART. 13077



**MANNEQUIN MH 5 (35 cm for cutting and coloring)**  
DARK BROWN  
ART. 40001



**MANNEQUIN MK 8 (55 - 60 cm for up do)**  
DARK BROWN  
ART. 13912



**MANNEQUIN SUPPORT**  
COD. ART. 40004



**ALUMINIUM SPATULA FOR HIGH LIGHTS**  
ART. 13025



**SPECIAL EFFECT HAIR GRAFFITI (50 strips box)**  
ART. 13008



**ELECTRONIC SCALE 2 Kg Div. 1 Gr**  
ART. 13672



**TIMER BES**  
ART. 13706



**TUBE ROLLER BES**  
ART. 13707



**PRATIK MECHES DISPENSER MACHINE**  
(to cut aluminium foil)  
ART. 13189



**ALUMINIUM ROLL g 400**  
SILVER  
ART. 13192

**GIFT BOX**



**REPAIR GIFT BOX**

- 1 PZ. REPAIR R1 - REGENERATING SHAMPOO 300 ml
- 1 PZ. REPAIR R3 - ULTIMATE REPAIR BALM 300 ml
- 1 PZ. REPAIR R4 - REPAIRING LIGHT SERUM 100 ml
- COD. ART. 12751**
- 1 PZ. REPAIR R1 - REGENERATING SHAMPOO 300 ml
- 1 PZ. REPAIR R3 - ULTIMATE REPAIR BALM 300 ml
- 1 PZ. REPAIR R5 - RECONSTRUCTIVE GLOSS DROPS 100 ml
- COD. ART. 12752**
- 1 PZ. REPAIR R1 - REGENERATING SHAMPOO 300 ml
- 1 PZ. REPAIR R3 - ULTIMATE REPAIR BALM 300 ml
- 1 PZ. REPAIR R6 - TONUS REPAIRING LOTION (minis) 120 ml
- COD. ART. 12753**



**GELATO GIFT BOX**

- 1 PZ. STRAWBERRY & YOGHURT FLOAT SHAMPOO 250 ml
- 1 PZ. TANTALISING PISTACHIO CREAM CONDITIONER 200 ml
- COD. ART. 70019**
- 1 PZ. VOLUMINOUS BUBBLE GUM SHAMPOO 250 ml
- 1 PZ. POWDER SUGAR PUFF CREAM CONDITIONER 200 ml
- COD. ART. 70020**
- 1 PZ. LAVISHLY LIQUORICE SHAMPOO 250 ml
- 1 PZ. QUENCHING PAPAYA MASK 250 ml
- COD. ART. 70021**
- 1 PZ. COOL MINT & ROSEMARY SHAKE SHAMPOO 250 ml
- 1 PZ. COCONUT & BANANA SPLIT MASK 250 ml
- COD. ART. 70022**



**HERGEN GIFT BOX**

- 1 PZ. S1 DANDRUFF SHAMPOO 400 ml
- 1 PZ. S2 SEVERE DANDRUFF SHIES LOTION 100 ml
- 1 PZ. S1 DANDRUFF SHAMPOO TRAVEL SIZE 100 ml
- COD. ART. 21860**
- 1 PZ. V1 HAIR FALLING SHAMPOO 400 ml
- 1 PZ. V2 HAIR FALLING LOTION 100 ml
- 1 PZ. V1 HAIR FALLING SHAMPOO TRAVEL SIZE 100 ml
- COD. ART. 21861**
- 1 PZ. LIQUORICE 400 ml
- 1 PZ. SHAMPOO 300 ml
- 1 PZ. MASK 300 ml
- 1 PZ. CANNABIS SHAMPOO TRAVEL SIZE 100 ml
- COD. ART. 27079**
- 1 PZ. P1 SERUM BALANCING SHAMPOO 400 ml
- 1 PZ. P2 SERUM BALANCING LOTION 100 ml
- 1 PZ. P1 SERUM BALANCING SHAMPOO TRAVEL SIZE 100 ml
- COD. ART. 21862**



**BES FRAGRANCE GIFT BOX**

- POMEGRANATE AND ALMOND**
- 1 PZ. SHAMPOO 300 ml
- 1 PZ. MASK 300 ml
- 1 PZ. PLUM and CARAMEL SHAMPOO TRAVEL SIZE 100 ml
- COD. ART. 27078**
- LIQUORICE**
- 1 PZ. SHAMPOO 300 ml
- 1 PZ. MASK 300 ml
- 1 PZ. CANNABIS SHAMPOO TRAVEL SIZE 100 ml
- COD. ART. 27079**
- PAPAYA AND GOJI**
- 1 PZ. SHAMPOO 300 ml
- 1 PZ. MASK 300 ml
- 1 PZ. SICILIAN GRAPEFRUIT SHAMPOO TRAVEL SIZE 100 ml
- COD. ART. 27080**



**BES PHF GIFT BOX**

- 1 PZ. SHAMPOO COLOR 300 ml + 1 PZ. CONDITIONER COLOR 300 ml + 1 PZ. EXTREME SHINE 100 ml
- COD. ART. 33066**
- 1 PZ. SHAMPOO COLOR 300 ml + 1 PZ. CONDITIONER COLOR 300 ml + 1 PZ. FRIZZ CONTROL 100 ml
- COD. ART. 33067**
- 1 PZ. SHAMPOO COLOR 300 ml + 1 PZ. CONDITIONER COLOR 300 ml + 1 PZ. GLOSS THERAPY 50 ml
- COD. ART. 33068**
- 1 PZ. SHAMPOO COLOR 300 ml + 1 PZ. CONDITIONER COLOR 300 ml + 1 PZ. MOSTURIZING MASK #12ml 150 ml
- COD. ART. 33069**
- 1 PZ. SHAMPOO CURL 300 ml + 1 PZ. CONDITIONER CURL 300 ml + 1 PZ. EXTREME SHINE 100 ml
- COD. ART. 33070**
- 1 PZ. SHAMPOO CURL 300 ml + 1 PZ. CONDITIONER CURL 300 ml + 1 PZ. FRIZZ CONTROL 100 ml
- COD. ART. 33071**
- 1 PZ. SHAMPOO CURL 300 ml + 1 PZ. CONDITIONER CURL 300 ml + 1 PZ. GLOSS THERAPY 50 ml
- COD. ART. 33072**
- 1 PZ. SHAMPOO CURL 300 ml + 1 PZ. CONDITIONER CURL 300 ml + 1 PZ. MOSTURIZING MASK #12ml 150 ml
- COD. ART. 33073**
- 1 PZ. SHAMPOO SMOOTH 300 ml + 1 PZ. CONDITIONER SMOOTH 300 ml + 1 PZ. EXTREME SHINE 100 ml
- COD. ART. 33074**
- 1 PZ. SHAMPOO SMOOTH 300 ml + 1 PZ. CONDITIONER SMOOTH 300 ml + 1 PZ. FRIZZ CONTROL 100 ml
- COD. ART. 33075**
- 1 PZ. SHAMPOO SMOOTH 300 ml + 1 PZ. CONDITIONER SMOOTH 300 ml + 1 PZ. GLOSS THERAPY 50 ml
- COD. ART. 33076**



**MAXJA GIFT BOX**

- 1 PZ. NOURISHING AND PROTECTIVE HAND CREAM 100 ml
- 1 PZ. RELAXING BODY MIST 200 ml
- COD. ART. 70071**
- 1 PZ. NOURISHING AND PROTECTIVE HAND CREAM 100 ml
- 1 PZ. NATURAL LUXURY BODY CREAM 250 ml
- COD. ART. 70072**
- 1 PZ. NOURISHING AND PROTECTIVE HAND CREAM 100 ml
- 1 PZ. RELAXING BODY MIST 200 ml
- 1 PZ. NATURAL LUXURY BODY CREAM 250 ml
- COD. ART. 70073**



**COLOUR LOCK GIFT BOX**

- 1 PZ. COLOUR LOCK - AMPHOTEN SHAMPOO 300 ml
- 1 PZ. COLOUR LOCK - MIDOPLA HAIR MASK 250 ml
- 1 PZ. COLOUR LOCK - PROTEIN FILLER HAIR SPRAY 150 ml
- COD. ART. 31034**
- 1 PZ. COLOUR LOCK - CLARIFYING SHAMPOO 300 ml
- 1 PZ. COLOUR LOCK - MIDOPLA HAIR MASK 250 ml
- 1 PZ. COLOUR LOCK - PROTEIN FILLER HAIR SPRAY 150 ml
- COD. ART. 31035**
- 1 PZ. COLOUR LOCK - AMPHOTEN SHAMPOO 300 ml
- 1 PZ. COLOUR LOCK - CLARIFYING SHAMPOO 300 ml
- 1 PZ. COLOUR LOCK - EMULSIONE D CONDITIONER 300 ml
- 1 PZ. COLOUR LOCK - PROTEIN FILLER HAIR SPRAY 150 ml
- COD. ART. 31036**



**BES FRAGRANCE  
SPECIAL EDITION GIFT BOX**

- LEMON MERINGUE TARTLET**
- 1 PZ. SHAMPOO TRAVEL SIZE 100 ml
- CHOCOLATE MUFFIN**
- 1 PZ. SHAMPOO TRAVEL SIZE 100 ml
- CANNABIS**
- 1 PZ. SHAMPOO TRAVEL SIZE 100 ml
- PLUM and CARAMEL**
- 1 PZ. SHAMPOO TRAVEL SIZE 100 ml
- SICILIAN GRAPEFRUIT**
- 1 PZ. SHAMPOO TRAVEL SIZE 100 ml
- COCONUT and BANANA**
- 1 PZ. SHAMPOO TRAVEL SIZE 100 ml
- COD. ART. 27077**

- 1 PZ. G1 INTENSIVE NOURISHING SHAMPOO 400 ml
- 1 PZ. G3 INTENSIVE NOURISHING BALM 400 ml
- 1 PZ. G1 INTENSIVE NOURISHING SHAMPOO TRAVEL SIZE 100 ml
- 1 PZ. G3 INTENSIVE NOURISHING BALM TRAVEL SIZE 100 ml
- COD. ART. 21863**
- 1 PZ. G1 INTENSIVE NOURISHING SHAMPOO 400 ml
- 1 PZ. G3 INTENSIVE NOURISHING BALM 400 ml
- 1 PZ. G4 PROTECTIVE & RESTRUCTURING OIL 100 ml
- COD. ART. 21864**
- 1 PZ. G1 INTENSIVE NOURISHING SHAMPOO 400 ml
- 1 PZ. G3 INTENSIVE NOURISHING BALM 400 ml
- 1 PZ. G5 NOURISHING & MULTIACTIVE FLUID 50 ml
- COD. ART. 21865**
- 1 PZ. B1 SHAMPOO FOR STRESSED, COLORED AND PERMED HAIR 400 ml
- 1 PZ. B3 LEAVE-IN TREATMENT FOR STRESSED, COLORED AND PERMED HAIR 400 ml
- 1 PZ. B1 SHAMPOO FOR STRESSED, COLORED AND PERMED HAIR - TRAVEL SIZE 100 ml
- 1 PZ. B3 LEAVE-IN TREATMENT FOR STRESSED, COLORED AND PERMED HAIR - TRAVEL SIZE 100 ml
- COD. ART. 21866**
- 1 PZ. B1 SHAMPOO FOR STRESSED, COLORED AND PERMED HAIR 400 ml
- 1 PZ. B3 LEAVE-IN TREATMENT FOR STRESSED, COLORED AND PERMED HAIR 400 ml
- 1 PZ. B4 FORTIFYING IMPACT TREATMENT 100 ml
- COD. ART. 21867**

- MELON JUICE**
- 1 PZ. SHAMPOO 300 ml
- 1 PZ. MASK 300 ml
- 1 PZ. CHOCOLATE MUFFIN SHAMPOO TRAVEL SIZE 100 ml
- COD. ART. 27082**
- ORANGE CAKE**
- 1 PZ. SHAMPOO 300 ml
- 1 PZ. MASK 300 ml
- 1 PZ. LEMON MERINGUE TARTLET SHAMPOO TRAVEL SIZE 100 ml
- COD. ART. 27081**
- PEACH ICE TEA**
- 1 PZ. SHAMPOO 300 ml
- 1 PZ. MASK 300 ml
- 1 PZ. COCONUT and BANANA SHAMPOO TRAVEL SIZE 100 ml
- COD. ART. 27083**

- 1 PZ. SHAMPOO SMOOTH 300 ml + 1 PZ. CONDITIONER SMOOTH 300 ml + 1 PZ. MOSTURIZING MASK #12ml 150 ml
- COD. ART. 33077**
- 1 PZ. SHAMPOO VOLUME 300 ml + 1 PZ. CONDITIONER VOLUME 300 ml + 1 PZ. EXTREME SHINE 100 ml
- COD. ART. 33078**
- 1 PZ. SHAMPOO VOLUME 300 ml + 1 PZ. CONDITIONER VOLUME 300 ml + 1 PZ. FRIZZ CONTROL 100 ml
- COD. ART. 33079**
- 1 PZ. SHAMPOO VOLUME 300 ml + 1 PZ. CONDITIONER VOLUME 300 ml + 1 PZ. GLOSS THERAPY 50 ml
- COD. ART. 33080**
- 1 PZ. SHAMPOO VOLUME 300 ml + 1 PZ. CONDITIONER VOLUME 300 ml + 1 PZ. MOSTURIZING MASK #12ml 150 ml
- COD. ART. 33081**



EXCLUSIVE DISTRIBUTOR

**COSMEC S.r.l.**

Dal 1964 al servizio dello stilista acconciatore  
Since 1964 at the service of the hairstylist

Via delle Industrie, 9 - 20070 - San Zenone al Lambro - (Milano) ITALY  
www.besbeautyscience.com - e-mail: info@cosmec-srl.it - Tel. +39 02 98870353/4 r.a.



DOWNLOAD THE DIGITAL VERSION



Cod. Art. 47218